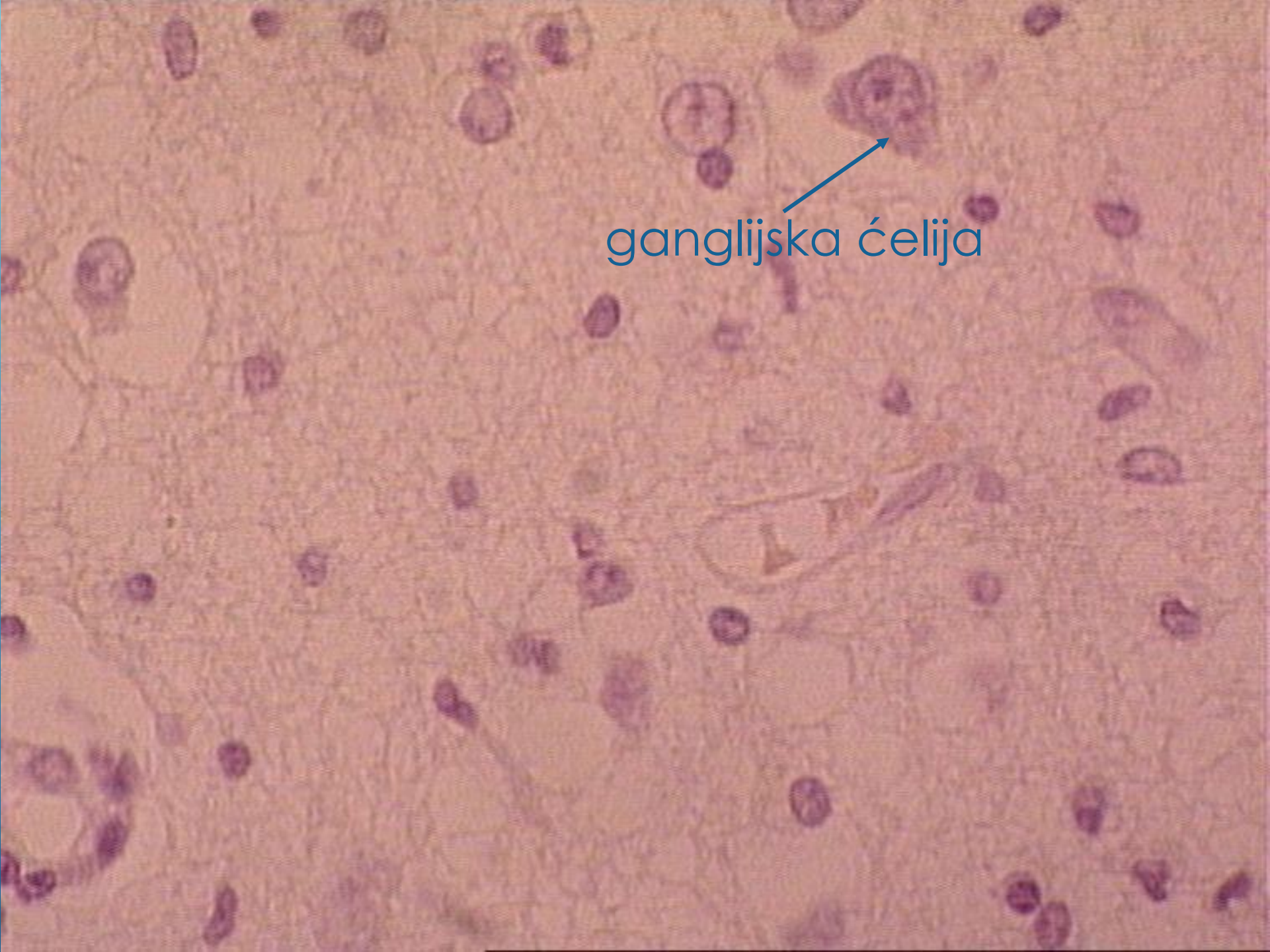


PATOLOGIJA CNS-A

Dr sci med. Mirjana Miladinović

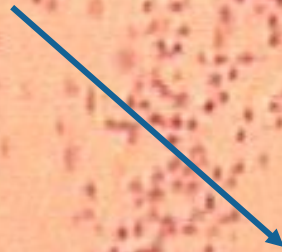
Encephalitis virosa






ganglijska ćelija

Virchow-Robinov prostor

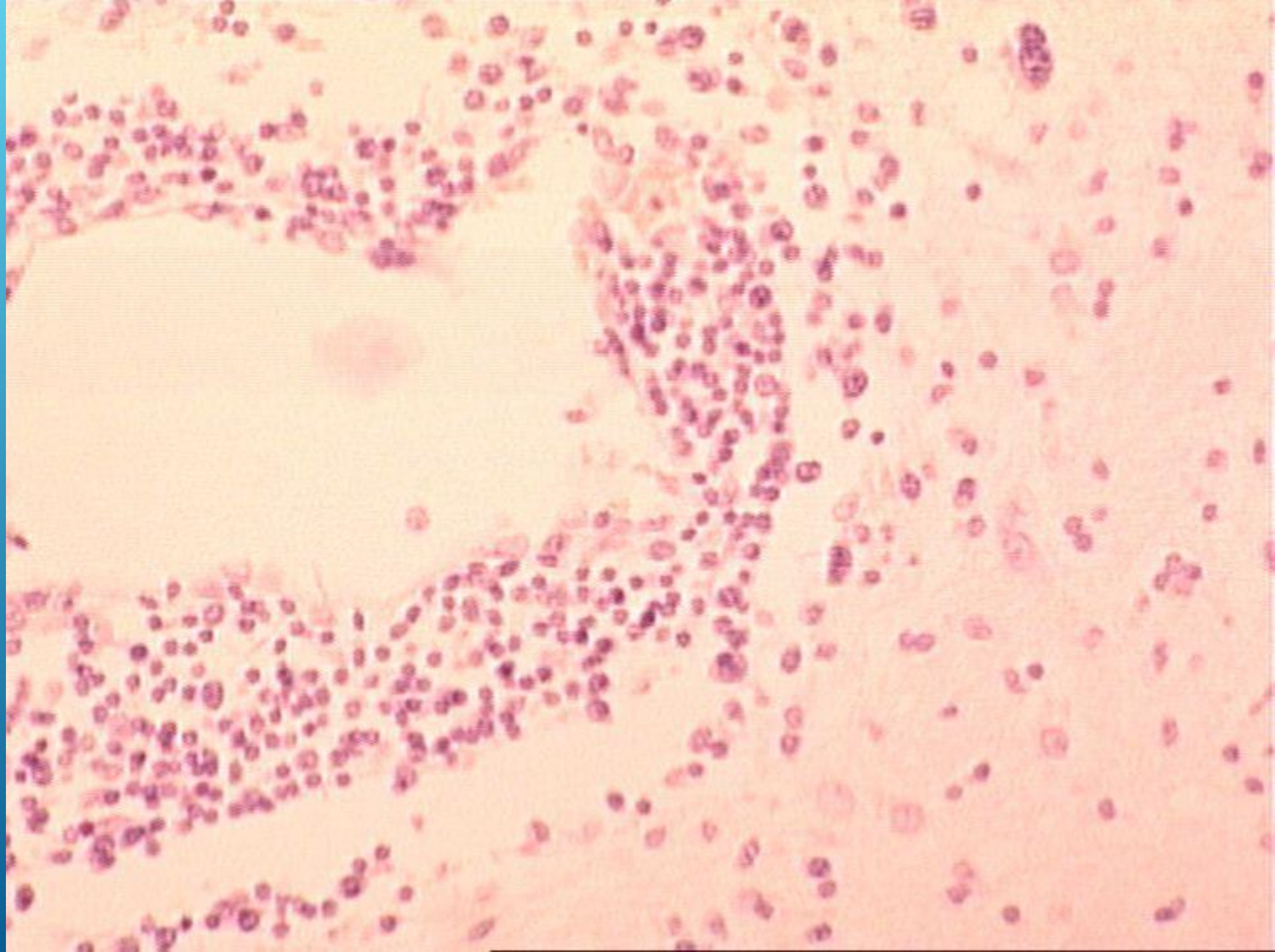


perivaskularni infiltrat



A microscopic image of tissue showing a perivascular muco-inflammatory infiltrate. The image displays a dense collection of small, round, pink-stained cells, likely leukocytes, clustered around a blood vessel. The background tissue is a light, pinkish color. The text "perivaskularni mufovi infiltrata" is overlaid on the right side of the image.

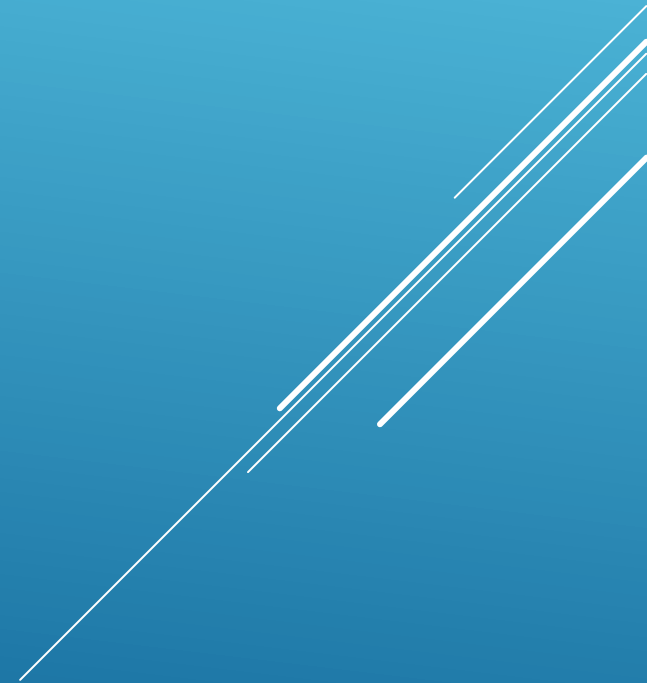
perivaskularni
mufovi infiltrata



kolikvaciona nekroza



Astrocytoma



DIFUZNI ASTROCITOM

- ▶ Fibrilarni
- ▶ Gemiostotični
- ▶ Protoplazmastični

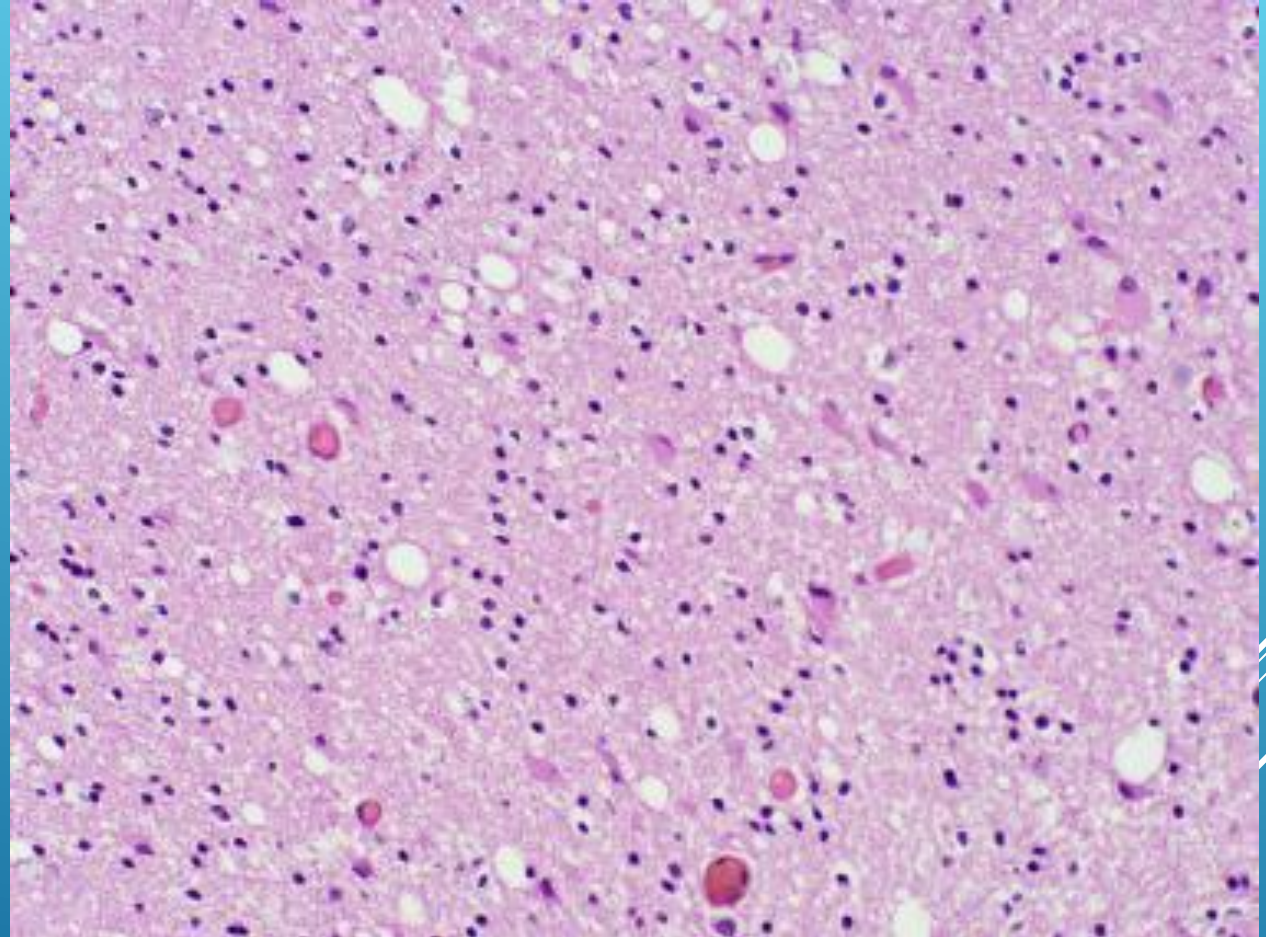
Umerena celularnost

Minimalna nuklearna atipija

Rastresit, mikrocističan matriks

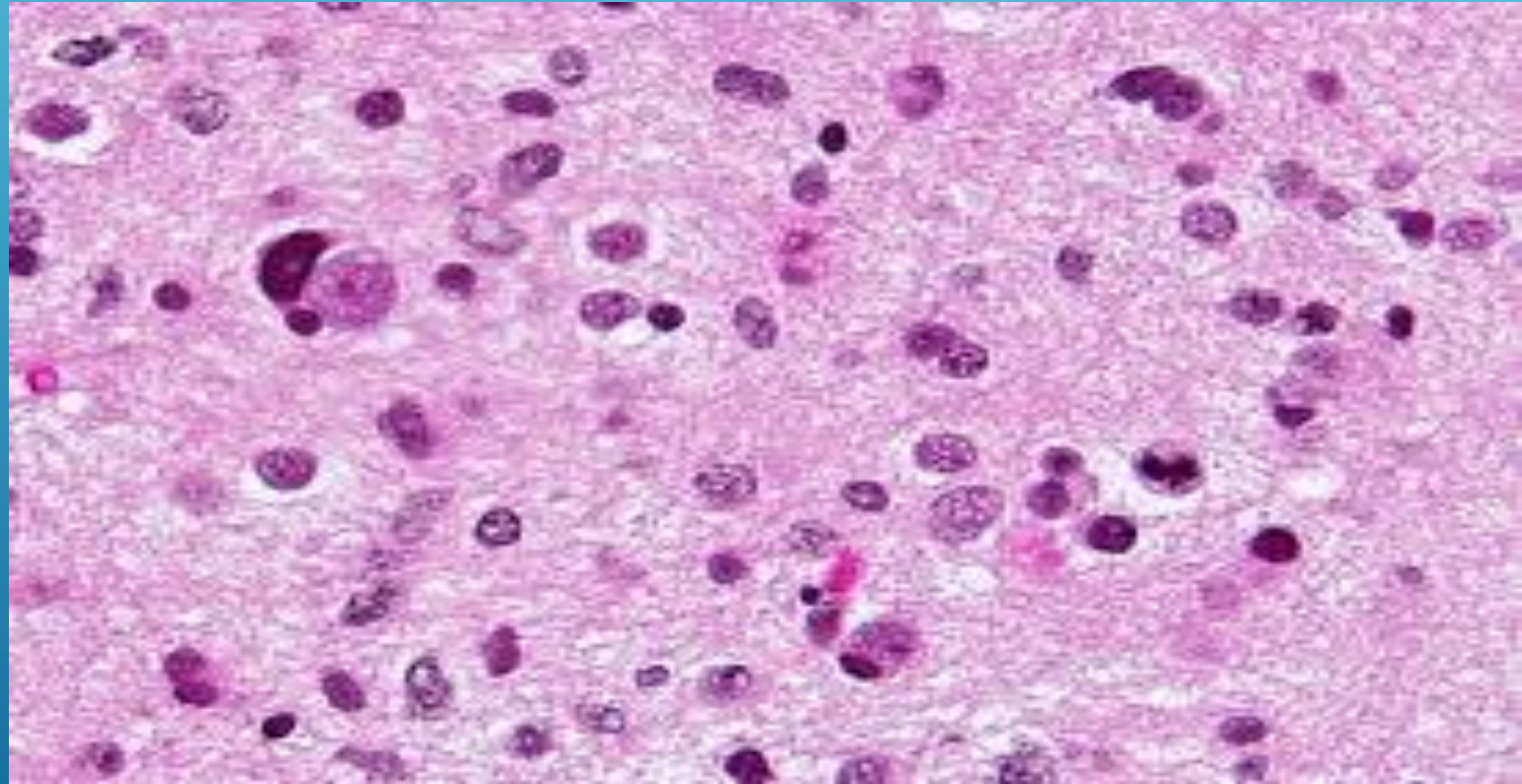
Tumorska satelitoza

Mogući mikrokalcifikati



ANAPLASTIČNI ASTROCITOM

- ▶ Veća celularnost
- ▶ Izraženija nuklearna atipija
- ▶ Mitoze (normalne i aberantne)



Glioblastoma multiforme

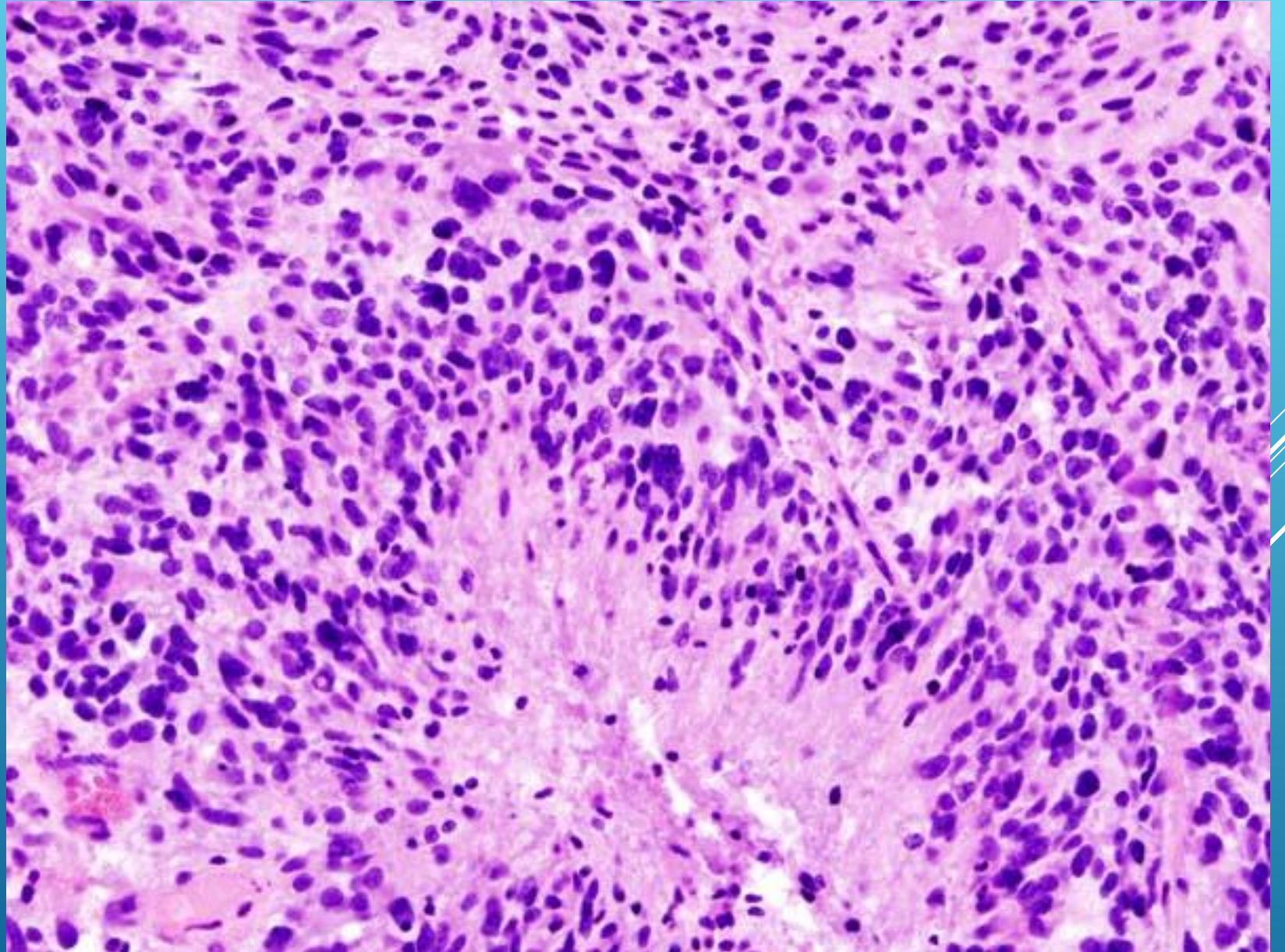


- ▶ Područja nekroze i krvarenja
- ▶ **Ćelijski pleomorfizam**
- ▶ **Patološke mitoze**
- ▶ **Nekroza**- velike geografske i okružene pseudopalisadama
- ▶ **Mikrovaskularna proliferacija**

Bolja prognoza:

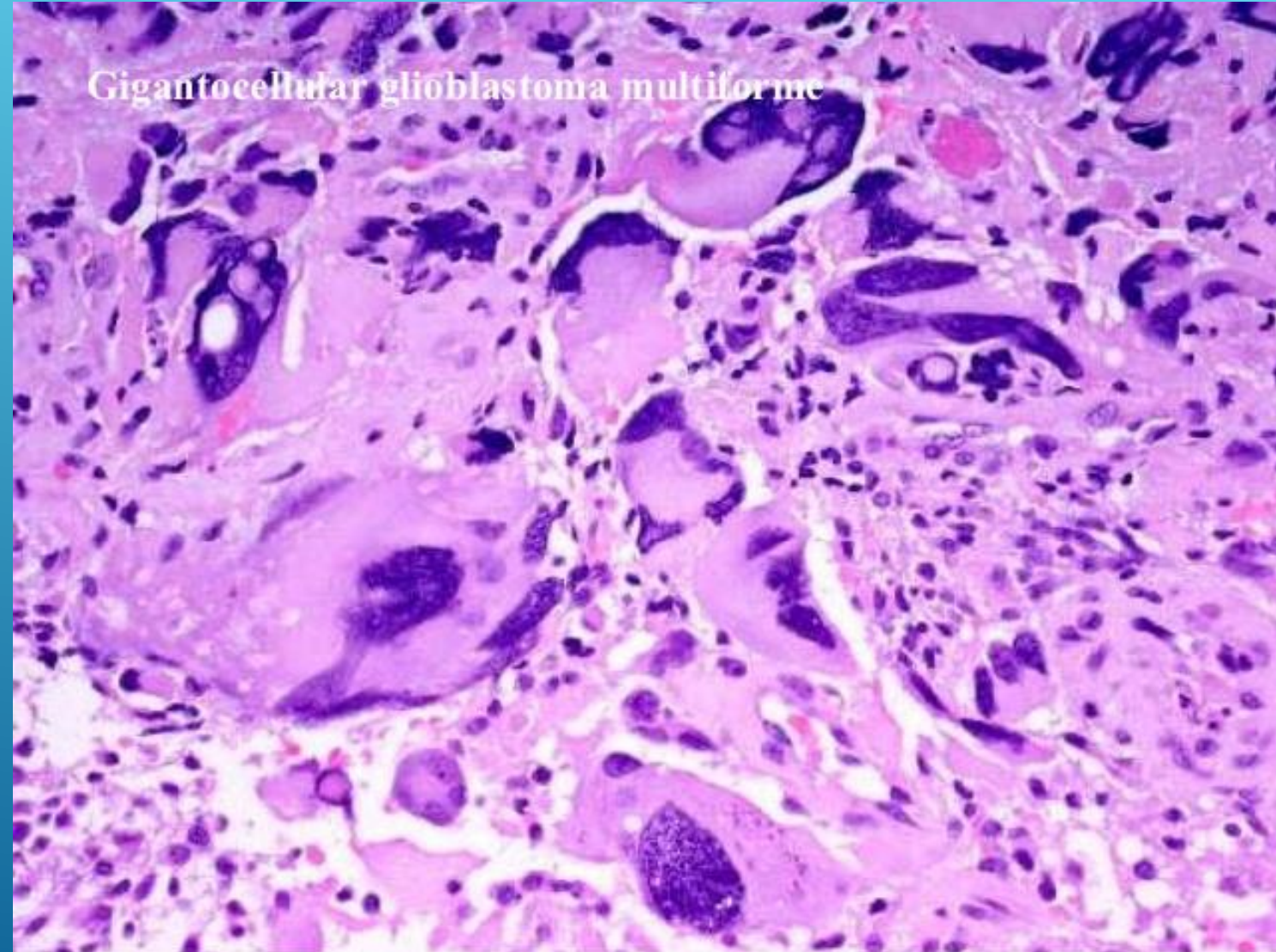
Mlađi od 45

Maksimalna resekcija tumora

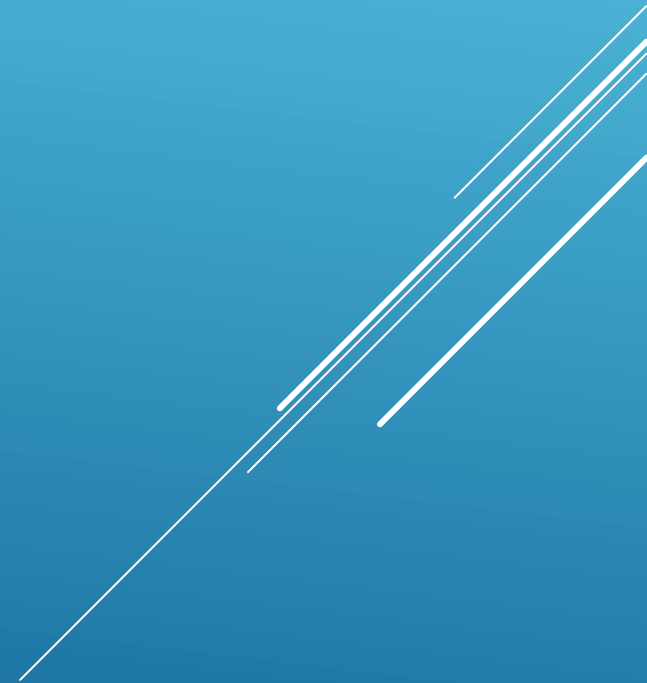


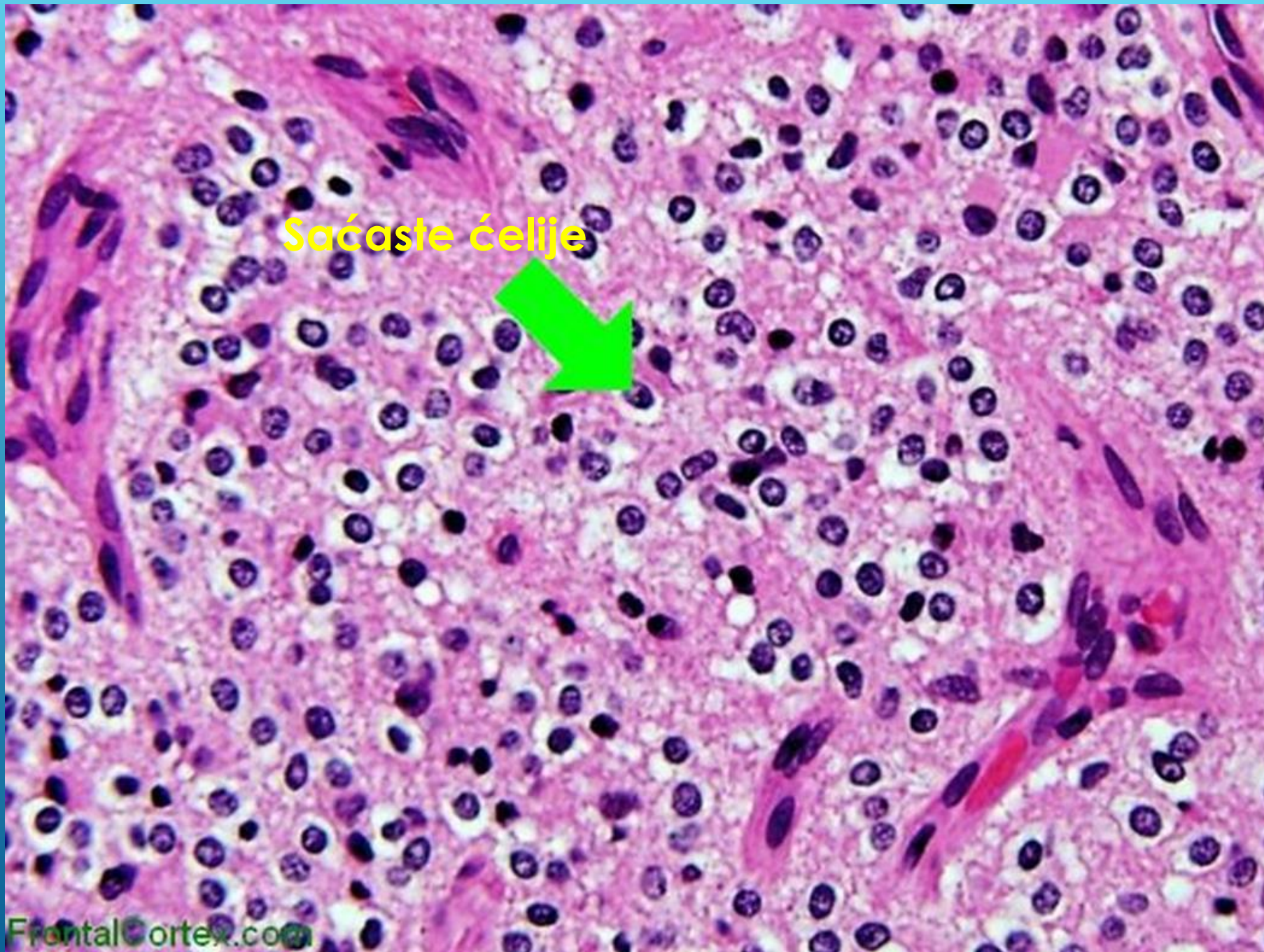
GIGANTOCELLULARNI GLIOBLASTOM

- ▶ Dominiraju bizarne, monstruozne džinovske ćelije i dobro razvijena retikulinska mreža strome



OLIGODENDROGLOMA





Sadržaste ćelije

ANAPLASTIČNI OLIGODENDROGLIOM

- ▶ Povećana celularnost
- ▶ Nuklearna atipija
- ▶ Mitoze
- ▶ Mikrovaskularna proliferacija
- ▶ Nekroza

